

▶▶▶ GETTING RESERVATIONS AT THE HOTTEST TABLES IN TOWN!

ON TAP: NORTHWEST ORGANIC BEER GUIDE

seattle

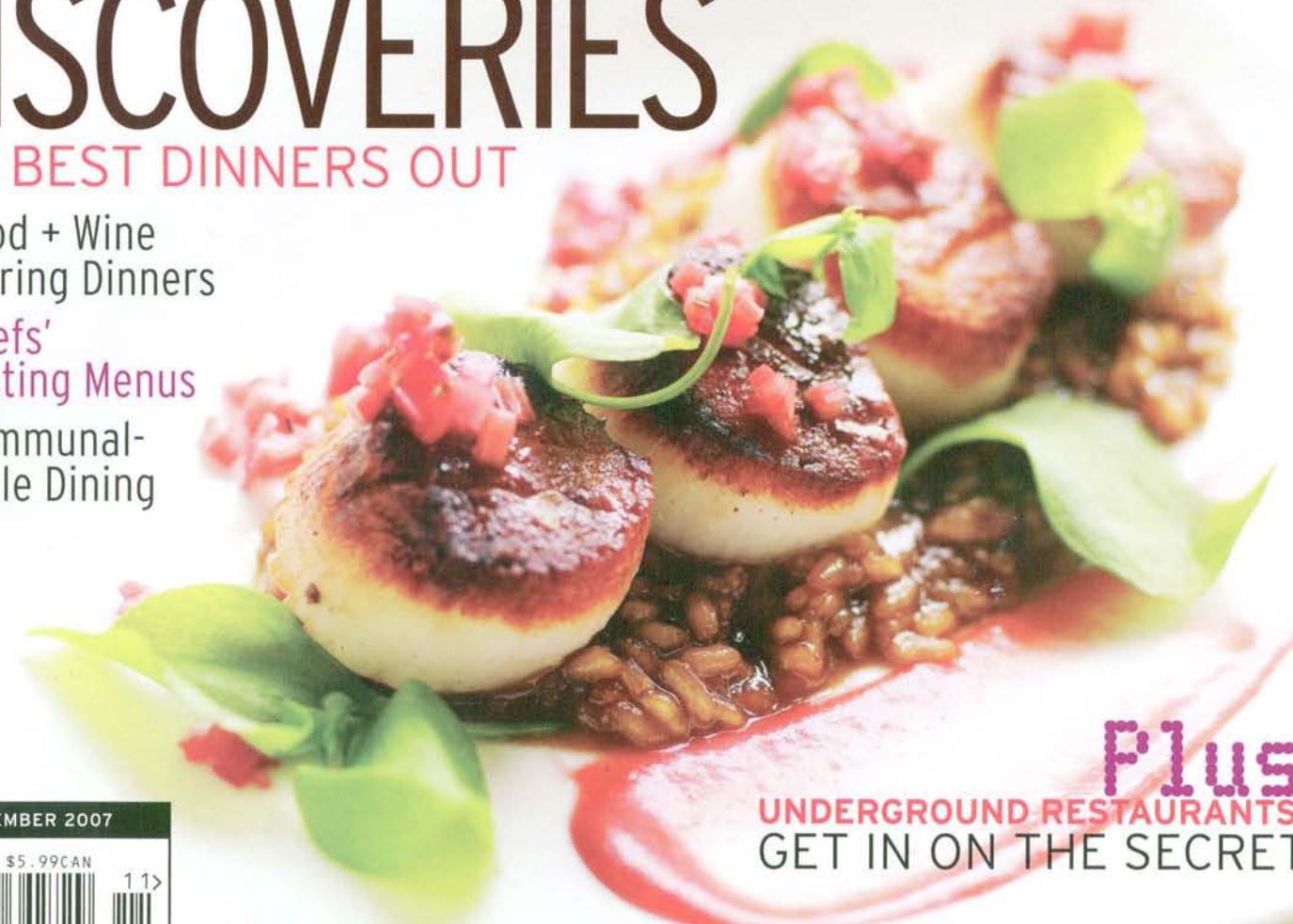
THE PREMIER SEATTLE MONTHLY

29 DINING DISCOVERIES

THE BEST DINNERS OUT

- ▶▶ Food + Wine Pairing Dinners
- ▶▶ Chefs' Tasting Menus
- ▶▶ Communal-Style Dining

WHO IS OUR PERSON OF THE YEAR?
+ THE MOST INFLUENTIAL PEOPLE OF 2007



Plus UNDERGROUND RESTAURANTS: GET IN ON THE SECRET

NOVEMBER 2007

\$4.99US \$5.99CAN

1 1 >

70989 34272 9

SEATTLEMAG.COM

WHO'S STEALING CARS IN SEATTLE AND WILL YOURS BE NEXT?

AFFORDABLE HEALTH CARE: HOW ONE SEATTLE COMPANY IS MAKING IT WORK

NO TIME TO COOK? KELLEY MOORE'S INSTANT HOLIDAY PARTY

new URBANISM

Harmonic Convergence

Welcome to 1 Hotel & Residences, Seattle

Digging Deeper

A city of thinkers elevates
the urban experience

Where The Green Glass Glows

Luxury and responsibility are equally
reflected in 1 Hotel & Residences, Seattle

Material Marvels

Elegance and innovation mingle
in naturally inspired design

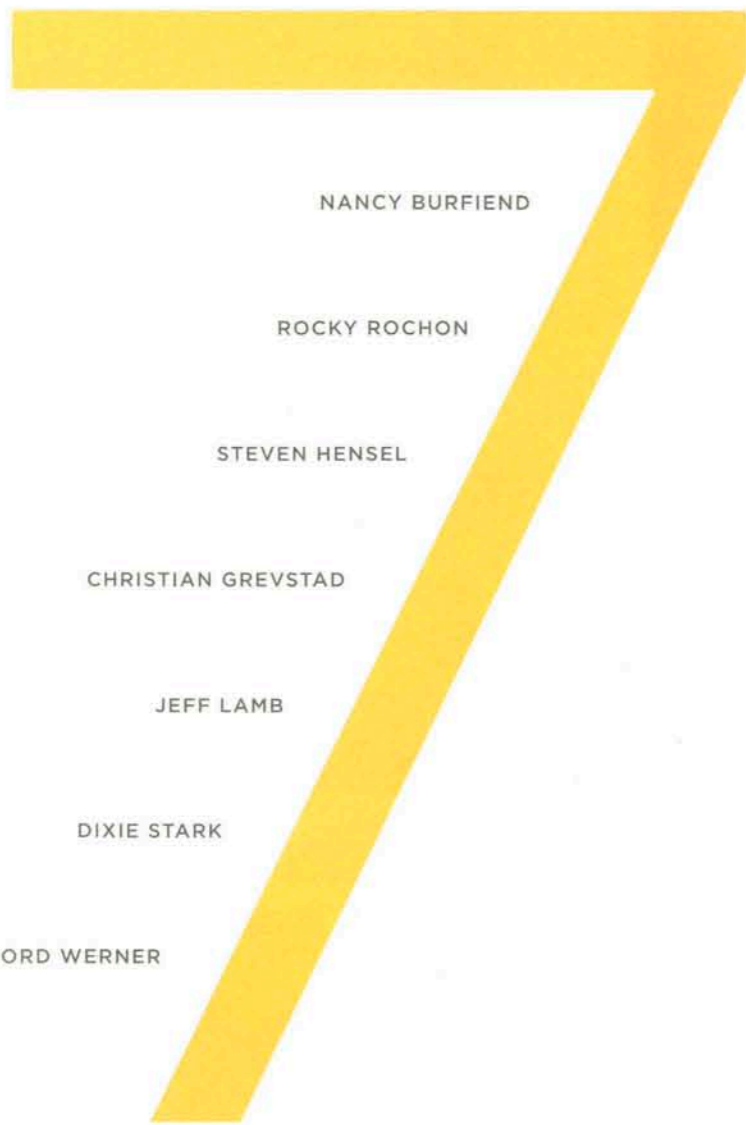
Magnificent Seven

Seattle's leading interior designers
redefine urban living

1

HOTEL
& RESIDENCES

SEATTLE



NANCY BURFIEND

ROCKY ROCHON

STEVEN HENSEL

CHRISTIAN GREVSTAD

JEFF LAMB

DIXIE STARK

GARRET CORD WERNER



SEATTLE'S MAGNIFICENT 7

Top interior designers create atmospheric spaces with a nod to northwest sensibilities

1 Hotel & Residences, Seattle is more than just a building; it brings new ideas to life and provokes conversation about the ideal way—or ways—of living in the city. It is in keeping with this vision that developer Paul Brenneke invited seven of Seattle's top interior designers to create their own personal visions of ideal urban living for the top seven penthouses of the tower. These seven—Nancy Burfiend, Steven Hensel in collaboration with Eggleston Farkas Architects, Christian Grevstad, Garret Cord

Werner, Dixie Stark, Jeff Lamb and Rocky Rochon—were asked by Brenneke to start with a model of the raw space and, given no limits but those of physics, create the ultimate expression of the 1 Seattle way of life.

One of the most wonderful aspects of the exercise is its purity: no clients, no budgets, no contractors — just designer, model and vision. Whether or not any of the designs are actually built is

entirely beside the point. (Of course, when prospective residents see the extraordinary plans on display at the Sales & Design Center in October 2007, they may very well choose to make one or another a reality in their own skyward home.)

In any case, as Brenneke puts it, "What resulted was some of the most inventive and striking work this city has seen or is likely to see for years to come. Whether they feature eco-resin panels or luxurious, organic materials and fabrics, spa-like vestibules or reflecting ponds, these homes capture the essence of a private retreat at the center of a dynamic urban environment."

It helps that the works are drawn on amazing backdrops. The real penthouse townhomes at 1 Seattle will range from about \$2 million for 2,200 square feet to more than \$11 million for a 6,800 square foot unit. They all include up to 23-foot ceilings and two-story expanses of glass looking out on the city and Puget

Sound—definitely targeted toward buyers accustomed to luxury.

The size and scope of these homes brought out the designers' imaginations in a variety of signature touches—koi ponds, sliding walls, hidden chambers and floating rooms. But none are merely decorative; each is a response to the space, the building, the city or the imagined requirements of the owners. In the end, the Seattle Seven show us there is not a singular vision for urban living, but many—a fitting lesson for a city coming of age.

*Back row (left to right)
Rocky Rochon, Christian Grevstad, Dixie Stark, Garret Cord Werner,
Front row (left to right)
Nancy Burfiend, Steven Hensel, and Jeff Lamb*

LIFE AT THE TOP REQUIRES IMAGINATION

Seattle's Seven redefine urban living

Nancy Burfiend: entertain

Describing the hypothetical residents of her **1** Hotel & Residences, Seattle penthouse design, Nancy Burfiend focuses on one central idea. "These people are entertainers," she says. "The kitchen should be thought of as the heart of this home, a pivotal point for social interaction and large enough for many guests." Cushions atop built-in platforms provide seating consigned to the living area corner near the fireplace. An even more intimate gathering space awaits on the other side of the hearth.

A floating staircase around the corner leads to the second floor where the bridge links the guest quarters with the master suite. The latter is an all-inclusive retreat, featuring a floating bed, fireplace, full-height cabinetry containing a wet bar, espresso machine and media, along with corner windows that embrace a built-in seating niche. "The master suite was designed for people accustomed to staying in fine hotels," says Burfiend. With a home like this, who'd ever want to leave?

"It's all about reduction," says Burfiend. By limiting their color palette and winnowing their materials down to a select few, the team—which included colleague Theresa Benny and presentation designer My Nguyen—fashioned a tranquil space that serves as a blank canvas on which residents may paint the richness of their friendships and collegial relationships.

Nancy Burfiend, ASID, IIDA, is an award-winning interior designer of commercial, public sector and high-end residential projects. The principal of NB Design Group in Seattle, she received her B.F.A. in Interior Design from the University of Washington, and has been widely published in regional and national magazines, including Metropolitan Home and Architectural Record.



Nancy Burfiend's spaces encourage guests to socialize and color the environment with conversation.

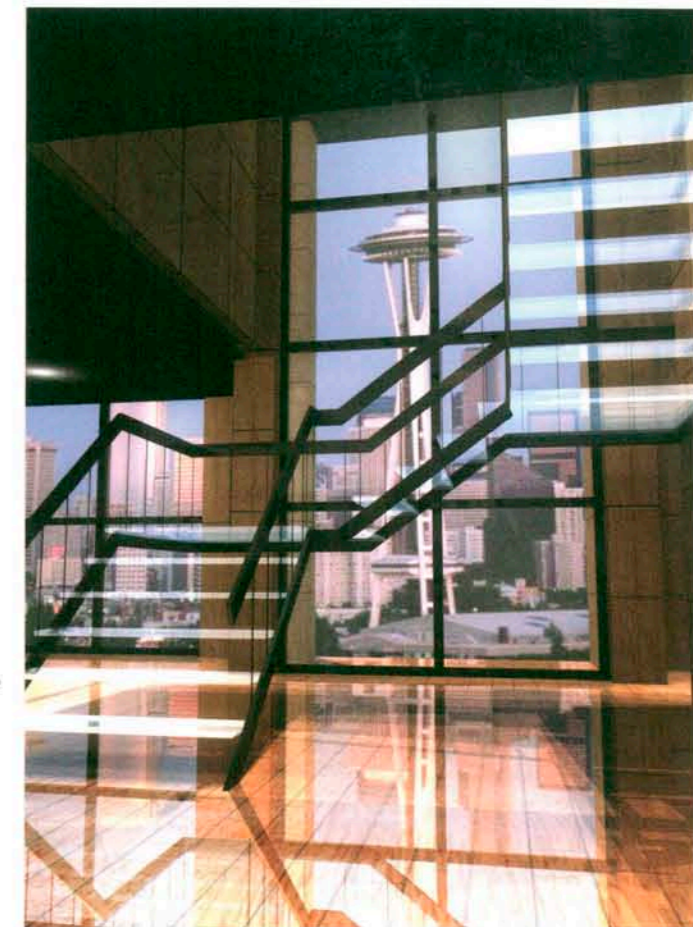
Dixie Stark: charm

Dixie Stark's personal charm comes through in her design for a gracious penthouse townhome. "This is an easy-to-live-in space that is perfect for relaxing, working or entertaining at home," says Stark. "I wanted the design to allow anyone who comes into this space to bring his or her own history—or to start a new chapter in their lives."

Entering the penthouse through a pair of leather-clad double doors, guests are greeted by a dramatic staircase made of glass and metal with treads that literally "float in space" lest they block the expansive views to the east. The study perches overhead. "It has a lofty feel to it, with a panoramic view of the living room and out over the city skyline," she explains. Complete with a hidden wall bed, the room maintains clean lines and offers an uncluttered retreat for occasional houseguests or office work.

Stark's respect for graceful lines and influences from the past is executed with a contemporary edge and a nod to the rich hues of the Pacific Northwest. From the walnut floors to the limestone tiles in the master bath, her design provides a warm and luxurious retreat from the outside elements—southern comfort indeed.

Founder and principal of Seattle-based DA STARK Interiors, Dixie Stark brings more than a decade of design experience to her practice, where she specializes in timeless interiors that are both client and architecturally specific. She received her interior design degree from the University of Arkansas, and has been published in regional and national media, including being selected as one of House Beautiful's "2003 Top Designers Under 40," and Seattle Homes & Lifestyles.



A staircase appears suspended in the sky at the center of Dixie Stark's graceful design.

Christian Grevstad: imagine

Except for the billowing flax-colored curtains framing views of Lake Union, the residence designed by Christian Grevstad is almost entirely devoid of hue or pattern, deriving drama from the contrast between snowy walls and floors and swarthy area rugs and cabinetry. With its bone-colored limestone floors, milky plaster walls and towering, skylighted spaces, it exudes an ethereal glow that belies its 2,100-square-foot dimensions. "The Northwest is famous for its neutral palettes," observes Grevstad, "but this one is a little bit fresher and brighter."

The levels of the dwelling inform and invigorate one another. A formal staircase descends from the entry, flanked by sheets of water flowing down textured glass panels. The kitchen features a tiered island for casual dining. A lofted bedroom and library hover overhead—one wall of each room is open to the view, another is fitted with diaphanous sliding panels for privacy. A circular staircase ascends to the rooftop terrace, where the owners can whip up a meal at the outdoor kitchen or dine by the glow of the elevated skylights. Grevstad feels his design approach provides a lot of latitude for the owners. "With this palette, you really have no limitations; you can do anything."

Christian Grevstad, IIDA, earned his B.F.A. in Interior Design from the University of Washington and worked at The Callison Partnership before launching Christian Grevstad Inc. in 1989. His residential, retail and hospitality work has been recognized by numerous awards and publications such as Metropolitan Home and Traditional Home, and his home furnishings line, the Christian Grevstad Collection Ltd., is represented by showrooms across the country.



Christian Grevstad chose a neutral palette to enhance the monolithic scale while maximizing the dweller's options.