

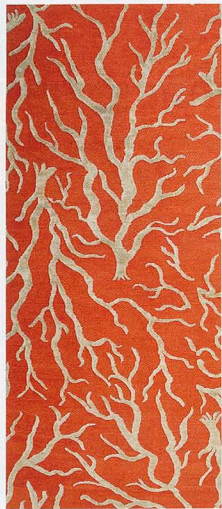


Houles

Channeling Murano glass, the 4-inch-long **Venezia** key tassel sparkles with handmade hexagonal beads strung on polyester. Sure to add sheen to draperies, pillows, and drawer pulls—in 14 colorways, such as fuchsia-and-orange. 8687 Melrose Avenue, West Hollywood, CA 90069; 310-289-2435; houles.com. **circle 362**

Vanderhurd Studio

Sea legs are essential when navigating the **Coral** rug, with its combination of raised pattern and flat-weave ground. Offered in coral or aqua wool, either as a 6-by-9-foot rug or a 3-by-9-foot runner. 260 Fifth Avenue, Suite 11, New York, NY 10001; 212-213-6541; vanderhurdstudio.com. **circle 363**



Edelman Leather

High end no longer has to mean *high maintenance*. After three years of testing, **Edelman Leather With Crypton** has proved itself resistant to wine, grease, grass, and crayon. The nine patterns—Royal Hide, Dream Cow, All Grain, Luster Leather, Scotch Grain, Metallic Dream Cow, Napoli, Shagreen, and Jumbo Crocodile—come in 750 colors. 80 Pickett District Road, New Milford, CT 06776; 860-350-9600; edelmanleather.com. **circle 364**



R 20th Century

Cast from original 1970's molds, Wendell Castle's toothsome **Molar** dining table is made of fiberglass-reinforced plastic, gel-coated an updated glossy jet black. The color lends its name to the Black Edition collection, which comprises the table as well as conference and cocktail tables and a shelf. 82 Franklin Street, New York, NY 10013; 212-343-7979; r20thcentury.com. **circle 365**



Christian Grevstad Collection

The **Galliano** bed is a sleeping beauty. Its body and winged headboard come fully upholstered, while the base and legs—in maple, oak, or walnut—are offered in eight finishes. Available in queen and king sizes. Dennis Miller Associates, 200 Lexington Avenue, Suite 1510, New York, NY 10016; 212-684-0070; dennismiller.com. **circle 366**